

# MARY CUMMINGS PARK AND WHISPERING HILL WOODS IN BURLINGTON AND WOBURN



PARKING    MAJOR ENTRANCES    TRAILS



1 Discover great examples of classic New England stone walls.



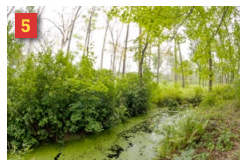
2 Savor a mature forest canopy in the deep woods.



3 Explore Central field, a reminder of our farming history.



4 Ponder an historic cow compound in Whispering Hill Woods.



5 See the quiet stream that drains the wetlands.



6 Watch the Burlington Flyers fly model planes, weekends & holidays.



The Friends of Mary Cummings Park work to preserve, publicize, and enhance the Park.

Visit [www.marycummingspark.org](http://www.marycummingspark.org)... and DONATE to help us pay for these maps!

# ABOUT MARY CUMMINGS PARK



## HISTORY

In 1927, Mary Cummings gave Boston the opportunity to become trustees for her land, “To hold and keep the same forever open as a public pleasure ground, and to maintain and care for the same in a suitable manner in accordance with that purpose,” – and Boston accepted.

A portion of the Park was taken by the US Air Force for a missile base in the 1950s, which later became Northeastern University’s Suburban Campus.

Due to uncertainty over the Park’s future, The Friends of Mary Cummings Park was founded to protect it, in 2007.

In 2010, The City of Woburn purchased the neighboring Whispering Hills land, and gave it permanently protected status, a major step forward. The Friends supported the preservation of Whispering Hills through legal action.

## THE PARK TODAY

The Park is one of the largest open spaces in metro Boston, with a wide range of habitat, including rare, large open meadows, along with upland forests, extensive wetlands and streams.

People visit the park for walking, bird-watching, biking, photography, and model plane activities with the Burlington Flyers.

Burlington has built a soccer field on a section of the park, which has brought many more visitors, and provides safe parking.

A new parking area is open on Muller Road at the entrance to Holly Glen.

A large section of the park and most of Whispering Hill Woods is designated Natural Heritage & Endangered Species Program (NHESP) by MA Fisheries and Wildlife.

**The park is off-limits to ALL motorized vehicles, include motor bikes and all-terrain vehicles.**

## HOW TO HELP

Consider **joining or donating** to The Friends of Mary Cummings. Your involvement and support will help us continue to:

- Defend the Park from development
- Keep the trails open and well marked
- Work with Boston to uphold Mary Cummings’ will and fulfill its role as Trustee
- Reach out to Boston and local residents
- Obtain a full environmental study
- Reach out to all regional organizations that should know about the Park and form alliances and connections

Visit [www.marycummingspark.org](http://www.marycummingspark.org) and DONATE to help us pay for these maps!  
Facebook: [facebook.com/marycummingspark](https://facebook.com/marycummingspark)